



Prices
2008/2009

SCENARIO collection

TÜCHLER®
Bühnen- & Textiltechnik

Contents

Art Canvas	page 20, 21
Backdrops	page 19
Bolton Twill / Duvetyn	page 17
Canvas, Cotton	page 14
Canvas, Trevira CS	page 16
Cleaning Agents	page 24
Cyclorama Canvas	page 14-16
Dance , Stage & Show Floors	page 3, 4
Draperies, Blackout Fabrics	page 18
Event, Display, Drapery Fabrics	page 12
Flame Retardants	page 21
Floor Cloth & Carpet Tiles	page 5
Gauzes, Nettings	page 10, 11
Glass Fabric	page 20
Mirrors, Foils, Raincurtain	page 13
Molleton, Bolton Twill, Duvetyn	page 17
Muslin	page 15
Projection Screens	page 7, 8
Ropes & Belts	page 24
Sprung Floor MANERO	page 6
Supplies	page 23, 24
Tapes	page 4, 22
Tarpaulins	page 9
Velours	page 1, 2
Terms and Conditions	Appendix

Index

4-Expo Tape	4	Expo Carpet	4	Ropes.....	24
All Purpose ClipSnappy	23	Fishbone	5	Rubber Straps	23
All-Purpose Cleaning Agent	24	Flame Retardants.....	21	Sales Literature	25
Antislip Tape.....	22	Floor Cloth	5	Schiele	20
Antisoil	24	Foils	7	Selfadhesive Tapes.....	22
Antistat	24	Gaffa	22	Shadow	7
Antitack.....	24	Gauzes.....	10	Sharkstooth Gauze.....	10
Art Canvas.....	20	Ghiaccio	7	Showfloor	3
Bach.....	1	Glass Fabric.....	20	Silk-WP	12
Backdrops	19	Glitter.....	3	Silon	8
Belts.....	24	Glow Tape.....	22	Silverfoil.....	13
Bianco Ottico	8	Green Box Cloth	19	Slip Way Tape.....	22
Blackout Fabrics.....	18	Haydn.....	1	Snappy	23
Blue Box Cloth	19	Hemp Belt	24	Sonic Blackout	9
Bobinett.....	10	High Gloss Foils	13	Sparkling	2
Bolton Twill	17	Ice.....	3	Sprinkler Net.....	10
Broadway.....	3	Kombi	5	Sprung Floor	6
Bunting	12	Kombi Perfekt.....	5	Stage Molleton.....	17
Cable Tunnel Tape.....	22	Laser Gaze	11	Stage Netting.....	11
Canvas.....	14	Lead Rope.....	24	Stage Velour	1
Canvas Trevira CS®	16	Lehar CS	2	Storage Container.....	23
Carpet.....	4	Linen	20	Storage Loops.....	4
Carpet Tiles	5	Linen 1014	20	Straps.....	23
Catalogues	25	Linen 602.....	20	Sun Block Soft Trevira CS ®... 18	
Chopin	1	Manero	6	Sun Light Trevira CS ®..... 18	
Chromakey.....	19	Mahler CS	2	Sun Sat Trevira CS ®..... 18	
Cielo.....	4	Midnight.....	1	Sun Stop Trevira CS ®..... 18	
Cinema	10	Mirrors.....	13	Super	8
Cleaning Agents	24	Molleton.....	17	Tape Dispenser.....	22
Colorado	7	Multicolor.....	12	Tape Residue Remover	24
ColorX.....	3	Muslin.....	15	Tapes	22
Conсор	3	Muslin Trevira CS ®	16	Tarpaulins.....	9
Container.....	23	Nebbia.....	7	Transportation Loops.....	4
Cotton Canvas	14	Nettings.....	10	Trolley f. Dancefloor, Carpet... 4	
Dance Floor Cleaner	4	Neve.....	7	TV-Backdrops	19
Dancefloor.....	3	Niagara	13	Twill Band.....	23
Dancefloor Tapes	4	Notturmo.....	7	Twinkle Velour	2
Dazzling Cloth	12	Outdoor.....	8	Variété.....	12
Decorsatin	12	Padua.....	10	Velcro® Tapes.....	23
Display Fabrics.....	12	Paint Canvas 600 B1	19	Velour	1
Display Molleton	17	Pallas.....	5	Venziano	10
Doublesided Tapes.....	22	Panorama	7	Verdi	1
Draperies.....	18	Perform.....	9	Voile Trevira CS ®	18
Drapery Fabrics	12	Picasso.....	20	Whitestar Microperf.....	8
Drosselmeyer.....	3	Pongine	12	Whitestar Standardperf	8
Duvelyn.....	17	Projection Cloth	7	Wide Canvas.....	14
Echo Velour.....	2	Projection Screens.....	7	Wide Muslin	15
Ecogard	21	PVC Mesh	11	Wien	8
Event Fabric Multicolor	12	Raincurtain.....	13	Woolserge	17
Event Fabrics	12	Ravel.....	1		
Event.....	3				

all prices without VAT.

All prices and other data in this pricelist are subject to change without prior notice

02/08

all prices without VAT.

All prices and other data in this pricelist are subject to change without prior notice

02/08

Velours

material short text	art.no. finish & standards	width in cm	full piece in EURO/lfm	cut in EURO/lfm	
Stage velour CHOPIN 150 100% Co, 350g/m ² , ~60m-pieces, 21 standard colours	flame-retardant acc. to EN 13773 - C1 acc. to ÖNORM B1, Q1, TR1, acc. to DIN 4102 B1	1533	150	11,64	15,12
					New!
Stage velour VERDI 150 100% Co, 470g/m ² , ~60m-pieces, 6 standard colours	flame-retardant acc. to EN 13773 - C1 acc. to ÖNORM B1, Q1, TR1, acc. to DIN 4102 B1	1535	150	15,00	19,56
					New! crease-resistant!
Stage velour VERDI WP 150 100% Co, 500g/m ² , ~60m-pieces, 6 standard colours	permanent flame-retardant acc. to EN 13773 - C1 acc. to ÖNORM B1, Q1, TR1, acc. to DIN 4102 B1	1537	150	19,56	25,44
					New! flame-protection water and dry clean resistant extreme crease-resistant!
Stage velour HAYDN 150 100% Co, 600g/m ² , ~30-35m-pieces	flame-retardant acc. to EN 13773 - C1 acc. to ÖNORM B1, Q1, TR1, acc. to DIN 4102 B1	1539	150	20,64	24,78
	colours acc. to pattern card		150	20,64	full pieces only
	special colours dyed to order: min. 250 lfm		150	20,64	full pieces only
Stage velour MIDNIGHT, Schwarz 100% Co, 600g/m ² , ~30-35m pieces	flame-retardant acc. to EN 13773 - C1 acc. to ÖNORM B1, Q1, TR1, acc. to DIN 4102 B1	3238	150	23,76	28,50
special colours dyed to order: min. 330 lfm					high light-proof deepest black
Stage velour BACH 120 100% Co, 350g/m ² , ~55m-pieces, 36 standard colours	flame-retardant acc. to EN 13773 - C1 acc. to ÖNORM B1, Q1, TR1, acc. to DIN 4102 B1	1542	120	14,28	14,28
	black		120	14,28	full pieces only
	colours acc. to pattern card		120	14,28	full pieces only
	cardinal red no. 34		120	17,88	full pieces only
Stage velour BACH 140 100% Co, 350g/m ² , ~50m-pieces	flame-retardant acc. to EN 13773 - C1 acc. to ÖNORM B1, Q1, TR1, acc. to DIN 4102 B1	1543	140	14,16	16,44
	black		140	14,16	full pieces only
	colours ab 440 lfm.		140	14,16	full pieces only
Stage velour BACH XL 100% Co, 350g/m ² , ~50m -pieces	flame-retardant acc. to EN 13773 - C1 acc. to ÖNORM B1, Q1, TR1, acc. to DIN 4102 B1	1499	178	20,16	24,24
	black		178	20,16	full pieces only
	colours ab 250m		178	20,16	full pieces only
Stage velour RAVEL 100% Co, 550g/m ² , ~50m-pieces, 6 standard colours	flame-retardant acc. to EN 13773 - C1 acc. to ÖNORM B1, Q1, TR1, acc. to DIN 4102 B1	1547	120	17,34	20,82
special colours dyed to order: min. 350 lfm	black		120	17,34	full pieces only
	colours acc. to pattern card		120	17,34	full pieces only

For pattern cards and further information visit www.tuchler.net!

Velours

material short text	art.no.	finish & standards	width in cm	full piece in EURO/lfm	cut in EURO/lfm
Stage velour MAHLER CS 100% Trevira CS, 380g/m ² ~ 30/35m-pieces	1420	permanent flame-retardant acc. to EN 13773 - C1 acc. to ÖNORM B1, Q1, TR1, acc. to DIN 4102 B1	140	19,80	<i>suitable for both curtains and upholstery</i> 60.000 Martindale-Tours! 29,64
Stage velour LEHAR CS 100% Trevira CS, 520g/m ² ~ 30/35m-pieces	1440	permanent flame-retardant acc. to EN 13773 - C1 acc. to ÖNORM B1, Q1, TR1, acc. to DIN 4102 B1	140	23,28	<i>suitable for both curtains and upholstery</i> 100.000 Martindale-Tours! 34,08
Echo-Velour black Co-Flor mit Acrylatrücken 550g/m ² , ~ 50m-pieces	1400	flame-retardant acc. to EN 13773 - C1 acc. to ÖNORM B1, Q1, TR1, acc. to DIN 4102 B1	120	27,12	<i>acoustics expert 's report!</i> <i>light impervious!</i> 32,52
Twinkle Velour SPARKLING 250g/m ² 138cm, 90% BW,10% Synthetik ~ 50m-pieces, 16 colours acc. to pattern card	3210	flame-retardant acc. to EN 13773 - C1 acc. to ÖNORM B1, Q1, TR1, acc. to DIN 4102 B1	138	23,52	<i>full pieces only</i>
For pattern cards and further information visit www.tuchler.net!					

Dance- & Showfloors

material short text	art.no.	finish & standards	width in cm	full piece in EURO/lfm	cut in EURO/lfm
Dancefloor EVENT		permanent flame-retardant		€/m ²	
100% Vinyl, 1340g/m ² , thickness: ~ 2mm		acc. to EN 13501-1 Cfl - S1			
single sided use		B1, Q1			
15 u. 20m-pieces	4285	black	200	18,96	9,48
25m-pieces	4285	19 colours acc. to Farbpa	200	20,88	10,44
Dancefloor CONSOR		permanent flame-retardant		€/m ²	
100% Vinyl, 2200g/m ² , 15 u. 20m-pieces		acc. to EN 13501-1 Cfl - S1			
thickness: ~ 1,7mm, double sided use		B1, Q1			
dimensional stability through glass insert					
fullfills highest demands					
black/white	4210		200	22,08	11,04
black/grey	4211		200	22,56	11,28
Dancefloor DROSSELMAYER		permanent flame-retardant		€/m ²	
100% Vinyl, ~ 2400g/m ² , 15 u. 20m-pieces		acc. to EN 13501-1 Cfl - S1			
thickness: ~ 3,2mm, single sided use		B1, Q1			
dimensional stability through glass insert					
black	4520		150	40,32	26,88
grey	4520		150	40,32	26,88
Dancefloor COLORX Matt		permanent flame-retardant			
100% Vinyl, 1600g/m ²		acc. to EN 13501-1 Cfl - S1			
thickness: ~ 1,2mm, double sided use		B1, Q1			
dimensional stability, easy to handle					
30 und 40 m pieces	4216		150	14,76	9,84
special colours dyed to order: min. 200 lfm			150	16,20	10,80
Dancefloor COLORX CHROMAKEY Matt		permanent flame-retardant			
100% Vinyl, 1600g/m ²		acc. to EN 13501-1 Cfl - S1			
thickness: ~ 1,2mm, double sided use		B1, Q1			
dimensional stability, easy to handle					
30 und 40 m pieces	4216	chromakey blue	150	16,38	10,92
	4216	chromakey green	150	16,38	10,92
Dancefloor COLORX Hochglanz		permanent flame-retardant			
100% Vinyl, 1600g/m ²		acc. to EN 13501-1 Cfl - S1			
thickness: ~ 1,2mm, double sided use		B1, Q1			
dimensional stability, easy to handle					
30 m pieces	4266		150	21,84	14,56
special colours dyed to order: min. 200 lfm			150	24,12	16,08
Showfloor BROADWAY		permanent flame-retardant		€/m ²	
glossy, single sided use		acc. to EN 13501-1 Cfl - S1			
100% Vinyl, 1400g/m ² , thickness: ~ 1,2mm		B1, Q1			
	4263	silver glossy	150	31,44	20,95
20m/40m-pieces	4263	silver matt	150	31,44	20,95
Showfloor ICE transparent		flame-retardant		€/m ²	New!
100% Vinyl, 1600g/m ²		acc. to EN 13501-1 Cfl - S1			
thickness: ~ 1,2 mm					
30m-pieces	4268		150	27,00	18,00
Showfloor GLITTER		flame-retardant		€/m ²	New!
100% Vinyl, 1600g/m ²		acc. to EN 13501-1 Cfl - S1			
thickness: ~ 1,2 mm					
30m-pieces	4269	silver black	150	35,40	23,59
	4269	gold black	150	35,40	23,59
	4269	silver transparent	150	36,24	24,16
	4269	gold transparent	150	36,24	24,16

Dance- & Showfloors

material short text	art.no.	finish & standards	width in cm	full piece in EURO/lfm	cut in EURO/lfm
Expo Carpet 4-EXPO-VEL 100% PP, 620 g/m ² , thickness: ~ 3mm 50m-pieces	D10000	permanent flame-retardant acc. to EN 13501-1 Cfl - S1 B1, Q1	200	5,94	7,74
Expo Carpet 4-EXPO-RIP 100% PP, 720 g/m ² , thickness: ~ 3mm 50m-pieces	D20000	permanent flame-retardant acc. to EN 13501-1 Cfl - S1 B1, Q1	200	6,06	7,92
4-EXPO-Protection Foil (surcharge) perfection foil for 4-Expo-Vel and 4-Expo-Rip	D30000		200	1,00	1,30
Trolley for Dancefloor und Carpet Rolls max. 6 rolls, with up to 200 cm	4290			960,00	
Storage and Transportation Loops with Velcro®-Fastener, colour black Grösse 1, ~ 100 cm Grösse 2, ~ 120 cm	4550 4551	to securely bind rolled up dance-floor and other materials		4,20 4,80	

Tapes & Accessories for Dance- & Showfloors

material short text	art.no.	width in cm	full boxes/pieces	Loose rolls/pieces
Dancefloor-Tape UNIVERSAL 100% PVC, 33m rolls, 36 rolls per Box	05446	black, white, grey, transp.	5	4,92
Dancefloor-Tape BROADWAY 100% PVC, 50m rolls, 24 rolls per Box 25m rolls, 36 rolls per Box	5439 5454	silver glossy black glossy	5 5	24,36 9,00
Dancefloor-Tape COLORX, transparent glossy 100% PVC 25m rolls, 36 rolls per Box	5447		5	9,00
Doublesided Selfadhesive Tape 100% PVC, 25m rolls, 24 rolls per box	5450	white	5	5,88
4-EXPO-Tape (double sided) 50m rolls, self-adhesive, 24 rolls per box residue free	11033	for use on plain floors as parquets, PVC, etc.	5	13,14
4-EXPO-Tape Power High Tack double sided Tape 25m rolls, self-adhesive, 30 rolls per box nearly residue free	11018	for use on rough floors as concrete, asphalt etc.	5	9,54
Tape Dispenser UNIVERSAL For the fast and easy application of adhesive tapes to floor surfaces	K10000			214,20

Cleaning Agents

	Art. Nr.	EUR
All-Purpose Cleaning Agent ANTISTAT Especially suitable for PVC dance floor surfaces and screens	5170 1l-Gebinde	16,56
Tape-Residue-Remover ANTITACK silicon residue and waterproof lettering	5174 1l-Gebinde	18,96

Carpet Tiles & Floor Cloths

material short text	art.no. finish & standards	width in cm	full piece in EURO/lfm	cut in EURO/lfm
Carpet Tiles PALLAS 100% PP, back: Latex, 2900g/m ² thickness: ~ 6,3 mm, 200x100 / 100x100 cm	flame-retardant (Cfl-S1) 4 colours acc. to Farbpattern card			non slip, self laying easy to lay and take up
carpet tiles for portable use	5770		ab 500m ² bis 500m ² bis 100m ² bis 50m ²	EUR/m ² 24,84 25,80 28,20 32,28
Transportation Trolley for Pallas Tiles				
Dimension 200x100 cm, bis 850 kg (=300 m ²)	5769			333,72
Floor Cloth KOMBI natur				
100% BW, 400g/m ² , ~ 50m-pieces double thread, wear and tear resistant perfect to paint on				€/m ²
	2018	300	11,28 3,76	13,56
Floor Cloth KOMBI natur B1				
100% BW, 425g/m ² , ~ 50m-pieces double thread, highly tearproof	permanent flame-retardant acc. to EN 13501-1 Bfl - S1 B1, Q1			€/m ²
	2020	300	12,30 4,10	14,76
Floor Cloth KOMBI black B1				
100% BW, 425g/m ² , ~ 50m-pieces double thread, highly tearproof	permanent flame-retardant acc. to EN 13501-1 Bfl - S1 B1, Q1			€/m ²
	2020	300	14,52 4,84	17,40
Floor Cloth KOMBI PERFEKT natur				
Topside 100% BW, Back: coated 700g/m ² , ~ 50m-pieces	permanent flame-retardant acc. to EN 13501-1 Bfl - S1 B1, Q1			Non-Slip - Non-Stick PVC-free backcoating! Easy to sew.
	2013	200	25,50 12,74	30,60
Floor Cloth KOMBI PERFEKT black				
Topside 100% BW, Back: plated 700g/m ² , ~ 50m-pieces	permanent flame-retardant acc. to EN 13501-1 Bfl - S1 B1, Q1			Non-Slip - Non-Stick PVC-free backcoating! Easy to sew.
	2013	200	29,46 14,74	35,40
Floor Cloth FISHBONE				
Linen/BW, 370g/m ² , ~ 50m-pieces	permanent flame-retardant acc. to DIN 4102 B1			
	2015 natur	218	23,64 10,85	28,38
	2015 black	218	25,74 11,81	30,90
Ready sewed ground cloths: please ask us. Made-to-measure item in own house!				
Portable Parquets: please ask for special catalogues and prices				
For pattern cards and further information visit www.tuchler.net !				

Sprung Floor MANERO

material short text	art.no. Description	Value in cm	full piece in EURO
MANERO fixed laying			
MAN0005	Base plate half Sprung Floor MANERO fix damping soft, middle or hard	122x122 244x122	138,00 221,16
MAN0025	Frame width 50 MM FIX damping soft, middle or hard	122 194 244	26,16 40,68 50,76
MAN0035	Frame Corner width 50 mm fix damping soft, middle or hard	30x30	14,52
MAN0045	Frame width 100 mm fix damping soft, middle or hard	122 194 244	34,20 52,80 65,88
MAN0055	Frame Corner width 100 mm fix damping soft, middle or hard	30x30	18,84
MAN0010	Feather-key for frame with hook and loop tape for Base plate 244 x 122 cm, consisting of: - 1 pcs. Länge 239 cm - 1 pcs. Länge 117 cm		18,36
MAN0015	Feather-key for frame with hook and loop tape for Base plate 122 x 122 cm, consisting of: - 2 pcs. Länge 117 cm		12,12
MANERO portable laying			
MAN0001	Base plate half Sprung Floor MANERO portable damping soft, middle or hard	122x122 244x122	145,92 237,00
MAN0020	Frame width 50 mm portable damping soft, middle or hard	122 194 244	27,00 42,12 52,20
MAN0030	Frame Corner with 50 mm portable damping soft, middle or hard	30x30	15,00
MAN0040	Frame width 100 mm portable damping soft, middle or hard	122 194 244	34,80 54,24 67,32
MAN0050	Frame Corner width 100 mm portable damping soft, middle or hard	30x30	19,32
MAN0010	Feather-key for frame with hook and loop tape for Base plate 244 x 122 cm, consisting of: - 1 pcs. Länge 239 cm - 1 pcs. Länge 117 cm		18,36
MAN0015	Feather-key for frame with hook and loop tape for Base plate 122 x 122 cm, consisting of: - 2 pcs. Länge 117 cm		12,12

Projection Screens

Rear and front projection

material short text	art.no.	finish & standards	width in cm	full piece in EURO/lfm	cut in EURO/lfm
NEVE 220 mattwhite/transparent 100% Vinyl, 450g/m ² , ~ 60 und 100m rolls thickness ~ 0,3 mm for rear and front projection	4132	permanent flame-retardant acc. to ÖNORM B1,Q1, TR1 DIN 4102 B1	220	14,28	17,88
COLORADO 220 crème-transparent, ~ 62m rolls 100% Vinyl, 450g/m ² for rear and front projection	4172	permanent flame-retardant acc. to ÖNORM B1,Q1, TR1 DIN 4102 B1	220	15,00	18,72
SHADOW 220 grey-transparent, ~ 60 and 100m rolls 100% Vinyl, 450g/m ² for rear and front projection	4134	permanent flame-retardant acc. to ÖNORM B1,Q1, TR1 DIN 4102 B1	220	14,28	17,88
PANORAMA 220 greyblue-transparent, ~ 62m rolls 100% Vinyl, 450g/m ² for rear and front projection	4175	permanent flame-retardant acc. to ÖNORM B1,Q1, TR1 DIN 4102 B1	220	14,28	17,88
CIELO 220 skyblue-transparent, ~ 62m rolls 100% Vinyl, 450g/m ² for rear and front projection	4174	permanent flame-retardant acc. to ÖNORM B1,Q1, TR1 DIN 4102 B1	220	14,28	17,88
NOTTURNO 140 anthracite-transparent, ~ 62m rolls 100% Vinyl, 450g/m ² for rear and projection	4156	permanent flame-retardant acc. to ÖNORM B1,Q1, TR1 DIN 4102 B1	140	9,84	12,30
NEBBIA 220 matt-transparent, ~ 62m rolls 100% Vinyl, 450g/m ² for rear and front projection	4176	permanent flame-retardant acc. to ÖNORM B1,Q1, TR1 DIN 4102 B1	220	14,28	17,88
GHIACCIO B1 clear-transparent, ~ 50m rolls 100% Vinyl, 400g/m ² for rear and front projection	5555	permanent flame-retardant acc. to ÖNORM B1,Q1, TR1 DIN 4102 B1	140	9,12	11,40

Cleaning Agents for Screens

see page 24

Indication: Screens are Thermoplastics. Therefore they change hardness according to temperature.

Under extreme low-temperature-conditions they may even break, under very high temperature they melt.

Accordingly they change their crease properties. Allow your Screens sufficiently time and room temperature so that crease and folds can volatilise.

Expansion behavior changes with temperature equally. In case of submitting indications of measurements please follow the indications regarding allowable tolerances as stated under General Terms and Conditions (see appendix).

For pattern cards and further information visit www.tuchler.net!

Projection Screens

front projection

material short text	art.no. finish & standards	width in cm	full piece in EURO/lfm	cut in EURO/lfm
WIEN 220 grey-opaque, 60m and 100m rolls 100% Vinyl, 450g/m ² 99% light impervious	for front projection permanent flame-retardant - acc. to ÖNORM B1,Q1, TR1 4120 DIN 4102 B1	220	14,28	New! 17,88
SUPER 210 white/silver-opaque, ~ 62m-pieces 100% Vinyl, 285g/m ² thickness ~ 0,2 mm	for front projection permanent flame-retardant - acc. to ÖNORM B1,Q1, TR1 4142	210	15,18	18,96
BIANCO OTTICO 220 white-opaque ~ 62m rolls 100% Vinyl, 450g/m ² for front projection	permanent flame-retardant acc. to ÖNORM acc. to ÖNORM B1,Q1, TR1 4170 DIN 4102 B1	220	14,28	17,88
WHITESTAR MICROPERF 220 white-perforated, ~ 62m rolls 100% Vinyl, 390g/m ² for front projection	permanent flame-retardant acc. to ÖNORM B1,Q1, TR1 4129 DIN 4102 B1	220	51,60	New! 61,92
WHITESTAR STANDARDPERF 220 white-perforated, ~ 62m rolls 100% Vinyl, 390g/m ² for front projection	permanent flame-retardant acc. to ÖNORM B1,Q1, TR1 4122 DIN 4102 B1	220	21,24	25,56
Projection Cloth SILON 515 Glass Fleece vinyl, 1400g/m ² for front projection on roller screens ~ 25m rolls ~ 25m rolls	permanent flame-retardant acc. to DIN 4202 B1 TM08 white-opaque TM09 pearl-opaque	515 515	290,40 418,80	nur ganze rolls nur ganze rolls
OUTDOOR 318 extremely tear-proof, light impervious Outdoor use: (-30°C bis +70°C) PES-reinforcement, PVC-coating 750g/m ² , ~ 50m rolls	permanent flame-retardant acc. to DIN 4102 B1 light impervious, black layer 4231	318	39,84	49,80 <i>digitally printable!</i>
BLACKOUT 210 white, light impervious, black layer 100% Vinyl, 650 g/m ² 100m rolls	permanent flame retardant acc. to DIN 4102 B1 4148	210	27,36	34,20

Welded Screens to Order:

Our Projection screens have a special weld and invisible seams - including custom-made products such as inflatable advertising media, and much more. All sizes and processing methods available - prices on request.

Indication: Welded and cut canvases are usually delivered flat. Please plan in a few days for free-hanging canvases (not taut on all sides) to become crease-free. Plastic canvases up to 300 cm wide and without strengthened edges can be delivered as rolls on hard paper cores. Pricing for hard paper cores on request.

For pattern cards and further information visit www.tuchler.net!

Tarpaulins

material short text	art.no.	finish & standards	width in cm	full piece in EURO/lfm	cut in EURO/lfm
SONIC BLACKOUT-Tarpaulin		permanent flame-retardant acc. to ÖNORM EN 13773 Klasse 1/ B1, Q1, TR1			<i>sound reflecting</i> <i>light impervious</i>
double coated PES-Fabric ~ 260g/m ² , ~ 65m-pieces sew and weldable, outdoor-use up to -15°C wear and tear resistant	1200	black	150	9,36	11,22

PVC-Tarpaulin PERFORM		permanent flame-retardant acc. to DIN 4102 B1			
double coated PES-Fabric ~ 700g/m ² , ~ 65m-pieces professional use on outdoor stages, marquees, etc.		other colours on request!			
temperature resistant from -25°C bis +70°C	1212	black	250	21,48	<i>only full rolls</i>
war and tear resistant, highly tearproof	1212	white	250	21,48	<i>only full rolls</i>

Cleaning Agent ANTISOIL for Tarpaulins *see page 24*

Open Air - Stage Constructions

Aluminium Stage Cabinets on demand.

For pattern cards and further information visit www.tuchler.net!

perven Throughout Europe

Aluminium Platform Elements Type "HANDY" 200x100 cm and Custom Sizes



perduced In-House, readily available!

Complete range of accessories as rails, steps, transport trolleys, covers, etc.

Auf Wunsch in jedem Farbton pulverbeschichtet.

Gauzes & Nettings

material short text	art.no.	finish & standards	width in cm	full piece in EURO/lfm	cut in EURO/lfm
Sharkstooth Gauze SUPER		flame-retardant			
100% Co, ~ 50m-pieces		acc. to EN 13773 Klasse 1			
for use with sprinkler systems		acc. to DIN 4102 B1			
		acc. to ÖNORM B1,Q1,TR1			
	2316	white - 95g/m ²	1100	58,68	73,44
	2316	grey - 95g/m ²	1100	59,76	74,76
	2316	black - 95g/m ²	1100	61,44	76,80
	New!	2316 white - 95g/m ²	1200	66,12	82,68
	New!	2316 grey - 95g/m ²	1200	70,44	88,08
	New!	2316 black - 95g/m ²	1200	70,44	88,08
Filled Cloth SUPER		flame-retardant			New!
100% Co, 180g/m ² , ~ 50m-pieces		acc. to EN 13773 Klasse 1			
		acc. to DIN 4102 B1			
		acc. to ÖNORM B1,Q1,TR1			
	2328	white	1160	102,36	127,98
	2328	grey	1160	102,96	128,70
	2328	black	1160	102,96	128,70
Fine Gauze CINEMA		flame-retardant			
100% Co, 35g/m ² , ~ 45m-pieces		acc. to EN 13773 Klasse 1			
		acc. to DIN 4102 B1			
		acc. to ÖNORM B1,Q1,TR1			
	2225	white - finely (28 hole)	800	79,56	95,52
	2225	grey - finely (28 hole)	800	83,76	100,56
	2225	black - finely (28 hole)	800	83,76	100,56
	35g/m², ~ 30m-pieces New!	2224 ecru - superfinely (39 hole)	550	54,96	66,00
	New!	2224 grey - superfinely (39 hole)	550	62,04	74,40
	New!	2224 black - superfinely (39 hole)	550	62,04	74,40
Bobinett PADUA		flame-retardant			
100% Co, 44g/m ² , ~ 48m-pieces		acc. to EN 13773 Klasse 1			
		acc. to DIN 4102 B1			
twilled yarn in wharp and wheft!		acc. to ÖNORM B1,Q1,TR1			
	2214	white	1200	67,08	83,88
	2214	grey	1200	73,20	91,50
	2214	black	1200	73,20	91,50
Bobinett VENEZIANO		flame-retardant			
100% Co, 80g/m ² , ~ 24m-pieces		acc. to EN 13773 Klasse 1			
		acc. to DIN 4102 B1			
		acc. to ÖNORM B1,Q1,TR1			
	5507	white	1200	74,88	91,68
	5507	grey	1200	81,60	102,00
	5507	black	1200	81,60	102,00
SPRINKLERNETZ 3x3		permanent flame-retardant			New!
100% Co, 90g/m ² , ~ 60m-pieces		acc. to EN 13773 Klasse 1			
extra tearproof, mesh size 3X3 mm		acc. to DIN 4102 B1			
colours on demand		acc. to ÖNORM B1,Q1,TR1			
for use with sprinkler systems					
	2327	white	540	33,84	42,36
	2327	black	540	35,76	44,76
	2327	white	1100	64,44	80,52
	2327	black	1100	67,80	84,72

Indication:

Fabrics for use with sprinkler systems: Please contact your local authorities as regulations vary according to region.

Gauzes & Nettings

material short text	art.no.	finish & standards	width in cm	full piece in EURO/lfm	cut in EURO/lfm
Sprinkler Net 520 / 4x4					
100% Trevira CS, 60g/m ² , ~ 60m-pieces mesh size 4x4 mm for use with sprinkler systems		permanent flame-retardant acc. to EN 13773 Klasse 1, acc. to DIN 4102 B1			
	2341	weiss, B1	520	9,54	12,36
	2341	grau, B1	520	12,06	15,72
	2341	black, B1	520	12,06	15,72
Sprinkler Net PE 500 / 4x6					
100% PE, 105 g/m ² , ~ 50-pieces mesh size 4x6 mm colour black on demand		permanent flame-retardant acc. to DIN 4102 B1			
	2335	white	500	12,84	15,42
Stage NETTING					
PE-Net, 200g/m ² 140-160g/m ² , rolls á 50m for use with sprinkler systems		permanent flame-retardant li DIN 4102 B1			
	3720	black	200	6,12	7,38
	3720	white	200	5,70	6,84
	3720	black	300	9,12	10,98
	3720	white	300	8,58	10,32
PVC Mesh LIGHT white					
100% Vinyl, 255g/m ² for use with sprinkler systems, extremely tearproof rolls á 50m		permanent flame-retardant acc. to ÖNORM B3800 B1, TR1			
	4182	u. DIN 4102 B1	500	30,66	36,78
PVC Mesh LIGHT black					
100% Vinyl, 225g/m ² for use with sprinkler systems, extremely tearproof rolls á 50m		permanent flame-retardant acc. to ÖNORM B3800 B1, TR1			
	4185	u. DIN 4102 B1	250	13,56	16,32
PVC Mesh LIGHT silver					
100% Vinyl, 320g/m ² for use with sprinkler systems, extremely tearproof rolls á 50m		permanent flame-retardant acc. to DIN 4102 B1			
	4209		320	25,14	30,18
Laser Gauze TREVIRA CS					
100% Trevira CS, 20g/m ² , rolls ~ 60lfm for use with Laserprojection		permanent flame-retardant acc. to EN 13773 Klasse 1, DIN 4102 B1			
Diamond-white	2250	white	300	17,52	21,06
Onyx-black	2250	black	300	18,96	22,80

Hint: "PVC-Mesh-Light" is suitable for welding and sewing and ideal for large scale digital printings.

For pattern cards and further information visit www.tuchler.net!

Event-, Display-, Drapery Fabrics

material short text	art.no. finish & standards	width in cm	full piece in EURO/lfm	cut in EURO/lfm
Event-fabric MULTICOLOR B1 100% synthetics, 70g/m ² ~ 50m-pieces 26 colours acc. to pattern card	permanent flame-retardant acc. to EN 13773 Klasse 1 ÖNORM A3800, Q1 1250 DIN 4102 B1	310	5,16	7,20
Decorsatin SILK-WP 100% PES, 90g/m ² rolls á 30/60m 21 colours acc. to pattern card	permanent flame-retardant acc. to EN 13773, 153 Klasse 1 acc. to ÖNORM B1,Q1,TR1	153	5,40	7,32
				New!
Bunting Woven TREVIRA CS 100% Trevira CS, 107g/m ² ~ 100m-rolls colours acc. to pattern card	permanent flame-retardant acc. to EN 13773 Klasse 1, DIN 4102 B1 ÖNORM B3820 B1)	300 153	<i>auf Anfrage</i> 7,32	<i>auf Anfrage</i> 9,18
Dazzling Cloth VARIÉTÉ 100% PES, 150g/m ² , ~ 50m-pieces elastic, metallic-gloss	flame-retardant			
for use as drapes only - not suitable for curtains	5571 oldsilver 5571 oldgold	110 110	6,12 6,12	7,92 7,92
Glitzersamt SPARKLING 250g/m ² 138cm, 90% BW, 10% synthetics ~ 50m-pieces, 16 colours acc. to pattern card	flame-retardant EN 13773 - C1 ÖNORM A3800 Q1 ÖNORM B3800 Tr1	138	23,52	<i>full pieces only</i>
Laser Gauze TREVIRA CS 100% Trevira CS, 20g/m ² , rolls ~ 60lfm high reflexion, transparent	permanent flame-retardant acc. to EN 13773 Klasse 1 (ehem. DIN 4102 und ÖNORM B3820 B1,Q1,TR1)			
Diamond-white	2250 white	300	17,52	21,06
Onyx-black	2250 black	300	18,96	22,74
PONGINE B1 100% Vi, 90g/m ² , 30 od. 60m-pieces colours acc. to pattern card	flame retardant acc. to EN 13773 Klasse 1 ÖNORM A3800 Q1 ÖNORM B3800 Tr1	140	6,00	7,80

For pattern cards and further information visit www.tuchler.net!

Mirrors - Foils - Raincurtain

material short text	art.no.	finish & standards	width in cm	full piece in EURO/lfm	cut in EURO/lfm
High Gloss Foil					
		permanent flame-retardant			
100% Vinyl, 250g/m ² , 30m-pieces					
thickness: 0,18mm	3633	white	130	2,40	3,60
2 x 15m Glanz auf Glanz	3633	black	130	2,40	3,60
Silverfoil					
		permanent flame-retardant			Spiegelfolie
100% Vinyl, 260g/m ²					
thickness: 0,3mm	3532	30m-pieces	130	8,70	-
GHIACCIO B1					
		permanent flame-retardant			cut material can not be rolled but must be folded!
glasklar, ~ 50m rolls		acc. to ÖNORM			
100% Vinyl, 400g/m ²		A3800 B1,Q1, TR1			
for front and rear projection	5555	u. DIN 4102 B1	140	9,12	11,40
Mirror Panel					
				piece:	
1000x2000x1mm	3520	silver		34,56	
Raincurtain Niagara					
		permanent flame-retardant			
NIAGARA					
100% Vinyl, 5mm with of stripes					Prices changeable due to USD/EUR exchange rates!
total width 91 cm	3642*				Please ask for current daily price.
Black/Diffraction,		height: 244cm	91	31,02	
White/Diffraction,		height: 488cm	91	58,08	
Silver/Diffraction Iridescent		height: 731cm	91	87,78	
Black/Gold, Black Silver		height: 244cm	91	25,86	
		height: 488cm	91	49,02	
		height: 731cm	91	76,08	
Solid Silver, Solid Black, Solid Gold		height: 244cm	91	23,22	
		height: 488cm	91	46,50	
		height: 731cm	91	72,30	
For pattern cards and further information visit www.tuchler.net!					

Canvas - Cotton

material short text	art.no. finish & standards	width weight		full piece in EURO/lfm	cut in EURO/lfm
		in cm	in g/m ²		
CANVAS nature	0025	160	- 200	2,22	2,88
100% Co	0025	220	- 200	3,30	4,26
~ 60m-pieces	0025	320	- 200	4,20	5,52
	0025	420	- 200	6,72	8,46
	0025	520	- 200	8,52	10,62
	0025	620	- 200	10,38	13,02
	0320	1050	- 225	38,04	45,72
CANVAS B1 nature	flame-retardant				
100% Co	EN 13773 - C1				
~ 60m-pieces	acc. to ÖNORM B1, Q1, TR1				
	DIN 4102 B1				
	0061	160	- 200	3,42	4,44
	0111	220	- 200	5,16	6,72
	0123	300	- 160	5,34	6,96
	0131	310	- 200	6,72	8,40
	0151	420	- 200	11,64	14,58
	0213	520	- 160	11,94	15,00
	0162	520	- 200	13,50	16,20
	0171	620	- 200	26,34	31,56
	0321	1000	- 225	59,34	71,22
CANVAS B1 white	flame-retardant				
100% Co	EN 13773 - C1				
~ 60m-pieces	acc. to ÖNORM B1, Q1, TR1				
	DIN 4102 B1				
	0061	160	- 200	4,62	6,00
	0111	220	- 200	5,52	7,20
	0123	300	- 160	6,00	7,80
	0131	310	- 200	7,32	9,54
	0151	420	- 200	15,00	18,00
	0213	520	- 160	15,84	19,02
	0162	520	- 200	19,14	22,98
	0171	620	- 200	30,96	37,14
	0321	1000	- 225	70,20	84,30
CANVAS B1 dyed	flame-retardant				
100% Co	EN 13773 - C1				
~ 60m-pieces	acc. to ÖNORM B1, Q1, TR1				
	DIN 4102 B1				
	0041 dyed to order: min. 500m	160	- 160	8,16	-
	0061 black	160	- 200	5,22	6,78
colours made to order: min. 120m	0131 black	310	- 200	7,80	9,42
	0151 black	420	- 200	17,22	20,70
	0171 black	620	- 200	36,18	43,44

For pattern cards and further information visit www.tuchler.net!

Muslin Cotton

material short text	art.no. finish & standards	width in cm	full piece in EURO/lfm	cut in EURO/lfm
MUSLIN nature				
100% Co, 80g/m ² ,	0810	300	2,88	3,78
~ 60m-pieces	0810	420	4,02	5,28
	0810	520	5,16	6,72
MUSLIN B1 nature				
	flame-retardant			
100% Co, 80g/m ² ,	EN 13773 - C1			
~ 60m-pieces	acc. to ÖNORM B1, Q1, TR1			
	DIN 4102 B1			
	0811	300	4,86	6,30
	0817	420	7,20	9,00
	0861	520	8,16	10,20
~ 50m-pieces	0821	610	20,46	24,48
	0831	1020	41,28	49,56
MUSLIN B1 white				
	flame-retardant			
100% Co, 80g/m ² ,	EN 13773 - C1			
~ 60m-pieces	acc. to ÖNORM B1, Q1, TR1			
	DIN 4102 B1			
	0811	300	5,16	6,72
	0817	420	8,76	10,92
	0861	520	9,84	12,30
~ 50m-pieces	0821	610	26,10	31,32
	0831	1020	53,28	63,96
MUSLIN B1 black				
	flame-retardant			
100% Co, 80g/m ² ,	EN 13773 - C1			
~ 60m-pieces	acc. to ÖNORM B1, Q1, TR1			
	DIN 4102 B1			
	0811	300	5,40	6,48
	0817	420	10,80	13,44
	0861	520	11,94	14,94
~ 50m-pieces	0821	610	27,66	33,24
	0831	1020	61,08	73,32

For pattern cards and further information visit www.tuchler.net!

Canvas TCS

material short text	art.no. finish & standards	width in cm	full piece in EURO/lfm	cut in EURO/lfm
CANVAS TCS nature-flame reatardant 100% Trevira CS, 160g/m ² , ~ 60m-pieces	permanent flame-retardant acc. to EN 13773 Klasse 1, DIN 4102 B1			
	0204	310	9,78	12,24
	0203	410	13,44	16,14
	0167	510	15,90	19,08

CANVAS TCS blanched flame-retardant 100% Trevira CS, 160g/m ² , ~ 60m-pieces	permanent flame-retardant acc. to EN 13773 Klasse 1, DIN 4102 B1			
	0204	310	10,44	13,08
	0203	410	14,22	17,76
	0167	510	16,38	19,68

Muslin TCS

MUSLIN TCS rough flame-retardant 100% Trevira CS, 100g/m ² , ~ 60m-pieces	permanent flame-retardant acc. to EN 13773 Klasse 1, DIN 4102 B1			
	0871	310	7,44	9,36
	0872	410	8,76	10,98
	0873	510	10,02	12,54

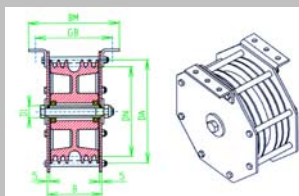
MUSLIN TCS blanched flame-retardant 100% Trevira CS, 100g/m ² , ~ 60m-pieces	permanent flame-retardant acc. to EN 13773 Klasse 1, DIN 4102 B1			
	0871	310	7,56	9,48
	0872	410	9,18	11,52
	0873	510	10,26	12,84

MUSLIN TCS black flame-retardant 100% Trevira CS, 100g/m ² , ~ 60m-pieces	permanent flame-retardant acc. to EN 13773 Klasse 1, DIN 4102 B1			
	0872	410	11,76	14,10
	0873	2,88 510	13,92	16,62

Indication:

Fabrics made from Trevira CS remain flame retardant after laundering and dry cleaning. Caution: soiled Trevira CS-fabrics may burn!

For pattern cards and further information visit www.tuchler.net!



Rolls and manila rope breaks:
We will be glad to send you documents and prices.



Molleton / Bolton Twill / Duvetyn

material short text	art.no. finish & standards	width in cm	full piece in EURO/lfm	cut in EURO/lfm
Stage MOLLETON black	flame-retardant			
100% Co, 300g/m ² ,	EN 13773 - C1			
~ 60m-pieces	acc. to ÖNORM B1, Q1, TR1			
Sondercolours ab 300m	DIN 4102 B1			
	1620	200	6,36	7,98
	1612	300	8,10	10,08
Stage MOLLETON white	flame-retardant			
100% Co, 300g/m ² ,	EN 13773 - C1			
~ 60m-pieces	acc. to ÖNORM B1, Q1, TR1			
Sondercolours ab 300m	DIN 4102 B1			
	1620	200	6,36	7,98
	1612	300	8,10	10,08
Stage MOLLETON coloured	flame-retardant			
100% Co, 300g/m ² ,	EN 13773 - C1			
~ 60m-pieces	acc. to ÖNORM B1, Q1, TR1			
colours acc. to pattern card	DIN 4102 B1			
	1612	300	9,00	11,28
Stage MOLLETON leicht	flame-retardant			
100%Co, 190g/m ²	EN 13773 - C1			
~ 60m-Stück	acc. to ÖNORM B1, Q1, TR1			
12 colours acc. to pattern card	1795 DIN 4102 B1	300	6,72	8,40
Display MOLLETON B1	flame-retardant			
100% Co, 150-160g/m ² ,	EN 13773 - C1			
~ 30m-pieces	acc. to ÖNORM B1, Q1, TR1			
96 colours acc. to pattern card	DIN 4102 B1			
	1629	130	4,20	5,46
15 colours acc. to pattern card	1681	300	7,56	9,48
black	1629	130	3,60	4,68
weiss	1629	130	3,60	4,68
Stage MOLLETON TCS	permanent flame-retardant			New!
100%Trevira CS, 350g/m ²	EN 13773 - C1, DIN 4102 B1			
one side napped, ~ 60m-Stück				
black	1640	300	23,88	29,88
white	1640	300	22,56	28,20
WOOLSERGE	flame-retardant			New!
100% Woll, 480g/m ² ,	EN 13773 - C1			
~ 55m-pieces	acc. to ÖNORM B1, Q1, TR1			
black	5515 DIN 4102 B1	150	14,76	18,48

For pattern cards and further information visit www.tuchler.net!



GENERAL DISTRIBUTOR for CM-LODESTAR*

Chain Hoists and control units in accordance
with BGV-D8 and BGV-C1
Please ask for the Hoist&Rigging price list.

* for A,H,CZ,SLO,HR,YU,SK - official distributor for other countries



Draperies, Blackout Fabrics

material short text	art.no. finish & standards	width in cm	full piece in EURO/lfm	cut in EURO/lfm
VOILE 300 CS white	permanent flame-retardant			
100% Trevira CS, 55g/m ²	acc. to EN 13773 Klasse 1, DIN 4102 B1			
~ 60m-pieces	4382 weiss	300	7,56	9,42
	4382 black	300	8,16	10,20
	4340 weiss	520	14,40	18,00
SUN LIGHT CS - Drapery Satin	permanent flame-retardant			
100% Trevira CS, 200g/m ² , ~ 50m-pieces	acc. to EN 13773 Klasse 1,			
14 colours acc. to pattern card,	DIN 4102 B1			
colours made to order: min. 300m	16133	140	8,40	10,50
SUN SAT CS - Blackout Satin	permanent flame-retardant			
100% Trevira CS, 350g/m ² , ~ 50m-pieces	acc. to EN 13773 Klasse 1,			
20 colours in pattern card, up to 90% light impervious	DIN 4102 B1			
colours made to order: min. 200m	16050	140	12,00	15,00
SUNBLOCK SOFT CS - Blackout Satin	permanent flame-retardant			
100% Trevira, 260g/m ²	acc. to EN 13773 Klasse 1,			<i>double woven material</i>
~ 50m-pieces	DIN 4102 B1			<i>very smooth appearance</i>
19 colours acc. to pattern card	16320	150	11,52	14,40
	16320 black	150	11,04	13,80
	16320 black	300	21,00	26,28
SUN STOP CS - Blackout Fabric	permanent flame-retardant			
100% Trevira CS, 270g/m ² , 60m-pieces	acc. to EN 13773 Klasse 1,			
28 colours acc. to pattern card	DIN 4102 B1			
100% light impervious, backcoated	16010	140	15,72	30,90
SONIC BLACKOUT - Tarpaulin	permanent flame-retardant acc. to			
double coated PES-Fabric	ÖNORM EN 13773 Klasse 1/			<i>sound reflecting</i>
~ 260g/m ² , ~ 65m-pieces	B1, Q1, TR1			<i>light impervious</i>
sew and weldable, outdooruse up to -15 C				
wear and tear resistant	1200 black	150	9,36	11,22

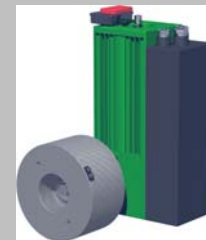
For pattern cards and further information visit www.tuchler.net!

Backdrops

material short text	art.no. finish & standards	width in cm	full piece in EURO/lfm	cut in EURO/lfm
BLUEBOX-Fabric CS 100% Trevira CS, ~ 200g/m ² ~ 60m pieces	permanent flame-retardant acc. to EN 13773 Klasse 1, DIN 4102 B1			
	0169	520	27,90	33,54
	0169	620	40,50	48,60
GREENBOX-Fabric CS 100% Trevira CS, ~ 200g/m ² ~ 60m pieces	permanent flame-retardant acc. to EN 13773 Klasse 1, DIN 4102 B1			
	0168	520	27,90	33,54
	0168	620	40,50	48,60
PAINT CANVAS 600 B1 100% Cotton, 225g/m ² width 1000 cm on demand ~ 50m-pieces, pretread to paint!	0174	600	32,40	38,88
Projection Backdrops				<i>see page 8 and 9</i>
Molleton / Duvetyn Backdrop				<i>see page 18</i>
Canvas Backdrop				<i>see pages 15 and 16</i>

For pattern cards and further information visit www.tuchler.net!

Curtain Tracks for Stage, Studio and Event



please ask for documents and price list

Art Canvas

material short text	art.no.	finish & standards	width in cm	full piece in EURO/lfm	cut in EURO/lfm
Art Canvas Linen 1014 nature					
100% Linen, 390g/m ²					
~ 50m-pieces	1920		300	29,04	34,80
Art Canvas Linen Schiele nature					
100% Linen, 290g/m ²					
	1900	50m rolls	155	7,08	<i>full pieces only</i>
	1900	10m rolls	155	8,28	<i>full pieces only</i>
Art Canvas Linen 602					
100% Linen, 330g/m ²					
~ 50m-pieces	1930		212	20,28	24,36
Theater Canvas Linen PICASSO					
100% Linen, 390g/m ²					
10m-layed	1902		300	19,08	<i>full pieces only</i>
~ 30m-pieces	1902		300	16,74	<i>full pieces only</i>
Paint Canvas 600 B1					
		flame-retardant			New!
pretreated to be painted; Colour: nature		acc. to EN 13773 - C1			
100% Cotton, 225g/m ²		acc. to ÖNORM B1, Q1, TR1,			
Width 1000 cm on order		acc. to DIN 4102 B1			
~ 50m-pieces,	0174		600	32,40	38,88

Glass Fabric

Glass Fabric S white					
100% Glas, 110g/m ² , ~ 100m-pieces		permanent flame-retardant			
for use with sprinkler systems		ÖNORM B3800			
		Klasse A, Q1, TR1			
	3330		150	13,80	17,28

For pattern cards and further information visit www.tuchler.net!

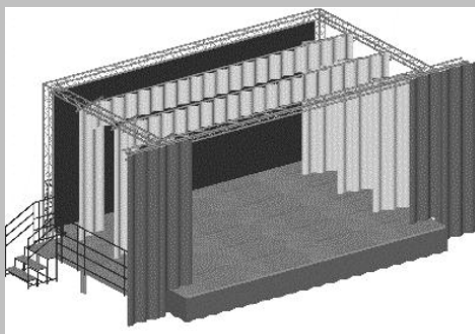
HAUSSMANN - Special Colours for Theaters

Large Assortment of
Paintgrounds, Laminated- und Paintersfilling
Screen-colours, Leather-Covering-Colours, Gauze-fillers, etc.

Flame-Retardants: ECOGARD®

material short text	art.no.	finish & standards/Norms			price EUR
ECOGARD® B45					
		all-purpose flame-retardant			
suitable for natural and synthetics		acc.to	can á		
ready for use	5201	DIN 4102	5/10kg	pro kg	5,76
fertility ~ 1 Liter per 2 - 4m ²	5201		25kg	pro kg	5,04
	5201		60kg	pro kg	4,32
ECOGARD® CELL					
		Flammschutzmittel			
works with wood, paper, cardboard		geprüft nach ÖNORM	can á		
ready for use	5222	A 3800 B1, Q1, Tr1	5/10kg	pro kg	4,32
	5222		25kg	pro kg	3,84
fertility ~ 1 Liter per 3 - 4m ²	5222		60kg	pro kg	3,24
ECOGARD® GOLDSTAR New!					
flame-retardant for Farbbronze-Imprägnierungen			can á		
no oxidation of paint-bronze	5235		5/10kg	pro kg	5,28
ready for use	5235		25kg	pro kg	4,44
	5235		60kg	pro kg	3,96
ECOGARD® ARSENAL New!					
Flameretardant primer			can á		
elastic, paste-like prime coat with					
efficient flame retardant impact.	5238		10kg	pro kg	7,08
Further information, datasheets and more you will find on www.tuchler.net .					

For Aluminium Trusses and Stage Cabinets



please ask us for a quote.

Tapes

Artikelbezeichnung	art.no.	width in cm	full boxes	single rolls/pcs.
GAFFA LC glossy self adhesive tape, 50m-rolls, 24 rolls per box	11115 black, white, grey	5	3,18	4,56
GAFFA RED LABEL glossy self adhesive tape, 50m-rolls, 24 rolls per box	05410 black, white, grey	5	5,76	7,32
<i>free of heavy metals</i>				
GAFFA BLACK LABEL matt self adhesive tape, 50m-rolls, 24 rolls pro Karton	11017 black, white, grey	5	7,38	9,42
<i>free of heavy metals</i>				
GAFFA fluorescent self adhesive tape, 25m-rolls, 24 rolls per box colours: orange, pink, yellow, green	11025	5	11,88	13,98
Dancefloor-tape UNIVERSAL 100% PVC, 33m rolls, 36 rolls per box	05446 black, white, grey, transparent	5	4,92	5,88
Dancefloor-tape BROADWAY 100% PVC, 50m rolls, 24 rolls per box 25m rolls, 36 rolls per box	5439 silver glossy 5454 black glossy	5 5	23,94 9,00	28,74 10,86
Dancefloor-tape COLORX Transparent glossy, 100% PVC 25m rolls, 36 rolls per box	5447	5	9,00	10,86
Doublesided Selfadhesive Tape 100% PVC, 25m rolls, 24 rolls per box	5450 white	5	5,88	7,08
4-EXPO Tape (doublesided) 50m rolls, selbpcs. leband, 24 rolls per box residue free	for use on plain floors as parquets, 11033	5	13,14	15,78
4-EXPO POWER - High Tack Doublesided Täge 25m rolls, adhesive, 30 rolls per box nearly residue free	for use on plain floors as concrete, asphalt etc. 11018	5	9,54	11,46
New!				
SLIP-WAY (Cable Tunnel Tape) 30m rolls, adhesive, 6 rolls per box residue free	4205 black 4205 black/yellow	15 15	26,22 30,60	31,44 36,72
GLOW Tape 10m rolls, 16 rolls per box adhesive, phosphorescend	11013	2	22,02	26,46
ANTISLIP-Tape 18,3m rolls, 20 rolls per box high tak, water resistant	11031 black/yellow	5	33,66	40,38
Tape Dispenser UNIVERSAL For the fast and easy application of adhesive tapes to floor surfaces	K10000			214,20
Get the residue away: with Antitack				see page 25

Accessories

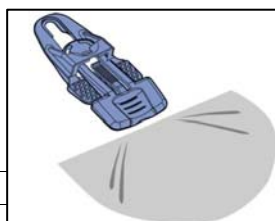
material short text	art.no. finish & standards	width in cm	price in EURO/lfm	full roll in EURO/lfm
Twill Band				
50 m and 100 m rolls				
black	5420	2,5	0,41	19,80
white	5420	2,5	0,41	19,80

			price in EURO/lfm	full roll in EURO/lfm
Velcro Tapes				
25m rolls				
Velour Side	5850*	2	0,82	19,98
Hook Side	5800*	2	0,82	19,98
Velour Side selfadhesive	5870*	2	1,34	33,48
Hook Side selfadhesive	5810*	2	1,34	33,48

		€/pcs.
Rubber Straps		
Length: 30cm, colours made to order an:	5150 white	0,78
#NAME?	5150 black	0,78

all-purpose Clip Snappy

gets and holds everything up to 6mm Thickness
up to 100 kg, with or without seam
as molleton, projection screens
stage nettings etc.



		€/pcs.	
940001	from 1000 pcs.	0,48	1 pack = 250 pcs.
940001	from 500 pcs.	0,61	1 pack = 250 pcs.
940001	from 250 pcs.	0,77	1 pack = 250 pcs.
940001	from 25 pcs.	0,83	1 pack = 25 pcs.

Storage Container 550l without wheels

outside dimension 1200 x 800 x 800 mm

inside dimension: 1100 x 750 x 650 mm

		€/pcs.
payload: 500 kg	940045	up to 5 pcs. 234,00
	940045	from 6 pcs. 210,00



Storage Container 550l with wheels

outer dimension 1200 x 800 x 940 mm

inner dimension: 1100 x 750 x 650 mm

		€/pcs.
payload: 300 kg	940012	up to 5 pcs. 274,80
	940012	from 6 pcs. 247,20

Top Cover for Storage Cart 550l

		up to 5 pcs. 94,80
	940013	from 6 pcs. 88,80

For Chainhoists and Rigging-Accessories
please download the according price-lists on www.tuchler.net

Cleaning Agents

art. No.

EUR

All-Purpose Cleaning Agent ANTISTAT

Highly concentrated, ph neutral, mild to skin, solvent free
Especially suitable for PVC dance floor surfaces and screens
streak-free maintenance cleaning
using only 1-2 teaspoons per bucket (1-2%)

5170 1l barrel

16,56

Cleaning Agent for Tarpaulins ANTISOIL

Highly effective cleaning agent for heavily soiled PVC surfaces
cleans gently and thoroughly
Dilute 2-5% with water(1:50 bis 1:20)

5172 1lbarrel

16,56

Tape-Residue-Remover ANTITACK

For fast and residue-free removal of tape residue
silicon residue and wterproof lettering

Use undiluted
apply with spray pistol or paint brush
wipe off with a cloth

5174 1lbarrel

18,96

Further information, datasheets and more you will find on www.tuchler.net.

Ropes & Belts

material short text	art.no.	finish & standards	diameter in mm	break. Load in kg	price per roll in EURO
Polyester Rope white					
100m rolls	5123		3	140	12,24
	5123		5	440	32,88
	5123		6	550	52,68
	5123		8	900	97,08
Polyester Rope black					
100m rolls	5123		3	140	15,36
	5123		5	440	37,44
	5123		6	550	61,80
	5123		8	900	117,36
Lead Rope					
25m rolls					
150g/m	5460				43,56
400g/m	5460				83,64
Hemp Belt					
50m rolls, full rolls only					
nature 3cm	5313				53,52
black 3cm	5313				87,00
nature 5cm	5313				73,44
black 5cm	5313				106,92

More Ropes & Belts on require.

Further information and more you will find on www.tuchler.net.

Catalogues, Sales Literature

	art.no.	EUR
Scenario Collection	24010	60,00
Dance & Show Floor Kollektion	25010	40,00
Single Pattern Cards from Scenario Collection	11088	1,80
Single Pattern Cards from Dance & Show Floor Collection	11120	2,90
Quick View Printversion	11130	<div style="display: flex; justify-content: space-between;"> 1 piece <i>free of charge</i> </div> <div style="display: flex; justify-content: space-between;"> from 5 pieces 1,00 </div>
Quick View Version with real patterns	11135	10,00
other printed Sales Literature	11140	<div style="display: flex; justify-content: space-between;"> 1 piece <i>free of charge</i> </div> <div style="display: flex; justify-content: space-between;"> from 5 pieces 0,90 </div>
Waterfalls screens	11081	22,00
Waterfalls textiles	11087	22,00
For pattern cards and further information visit www.tuchler.net		

Aufschlag	1,20000
Wechselkurs	1,00000
Faktor	1,20000

General Terms and Conditions

of TÜCHLER Bühnen- & Textiltechnik GmbH
hereinafter referred to as seller or contractor

Office: Rennbahnweg 78, A-1220 Vienna; registered company number: FN 26 5204 g; VAT: ATU 61869589

Valid from 01.03.2008

1. Contractual basis:

Orders which are binding for the purchaser can be rejected by us in writing within 14 days without reasons being stated. If no objection is raised, the contract is deemed as agreed to on the basis of the order received and the following terms and conditions. As a basic principle only the agreements of this contract are applicable. Any other agreements require the written form.

2. Exchange and cancellation:

As a basic principle there shall be no legal claim to exchange and/or cancellation. A processing fee of 25% of the order value, but not less than EURO 45.00 excluding VAT, shall be charged for cancellations accepted by the seller. Products already in the processing stage (cut-outs, clothing, and colouring) are explicitly excluded from exchange and cancellation; the same applies to made-to-measure or custom-made items.

3. Deviation reservations and tolerances:

Textiles, Foils and ProjectionScreens

Any deviations which are normal in the trade or in production such as deviations in colour, measurement changes and the modification of technical data are reserved. Over and under delivery of up to a maximum of 15% are deemed as accepted.

Tolerances:

Skewed weft: +/- 1.5% of the material's width

Length deviation: +/- 3%

Shrinkage deviation: +/- 3%

Measurement deviations for textiles, canvases and similar area-measured materials when ready-made: +/- 1,5%

In addition, the standard terms and conditions of the German Textile Industry apply.

Steel and aluminium constructs and individual parts:

unless other tolerances have been agreed separately in writing and confirmed by the seller, the valid industrial standards shall be deemed as agreed and applicable for the area of application. Deviations which exceed the above tolerances must be made the subject-matter of a complaint immediately after acceptance of the product(s). Complaints submitted after materials have been altered, e.g. through cutting to size and/or soiling or damage, will not be recognised.

4. Prices and terms of delivery

Our prices are fixed prices exclusive of applicable turnover tax or VAT.

Our prices are all ex-works, deliveries will be charged to you at cost-price.

We charge a processing fee of EURO 9.80 for invoiced amounts up to EURO 100 excluding VAT.

5. Down payment:

Down payment must be made to the agreed amount immediately after the contract has been agreed.

6. Fixed delivery dates, delivery deadlines, rights of withdrawal:

Fixed delivery dates are only binding for us after they have been confirmed in writing and explicitly defined as fixed dates or fixed delivery times.

In case of non-adherence to an agreed delivery date the purchaser shall determine an appropriate period of grace of at least two weeks, which begins with the written notification of default.

Disturbances for which we are not responsible, e.g. acts of God affecting us and our suppliers, and significant procurement difficulties which affect delivery times will be communicated to the customer and do not constitute any claim to indemnification. Claims to indemnification may only be made in cases of gross negligence and intent, the right to cancellation under the applicable terms and conditions remains unaffected.

The seller has the right to withdraw if the upstream supplier cannot deliver due to acts of God or insurmountable technical difficulties, or the purchaser has made incorrect statements concerning his creditworthiness and has failed to make the agreed down payment, or if insolvency proceedings are opened against the purchaser's assets.

The purchaser shall not be entitled to withdraw from an order if he himself initiated business proceedings or if the contract came into effect without prior discussion between the parties, or in the case of contracts under which goods or services are to be provided immediately. Every withdrawal requires the written form to become legally effective.

7. Cancellation:

On principle there shall be no legal claim to cancellation. A processing fee of 25% of the order value, but not less than EURO 45.00 excluding VAT, shall be charged for cancellations accepted by the seller. Products already in the processing stage (cut-outs, clothing, and colouring) are explicitly excluded from exchange and cancellation, and the same applies to made-to-measure or custom-made items.

8. Acceptance:

The seller shall inform the purchaser immediately once the goods have become available; the purchaser shall thereupon enable acceptance of the goods under consideration of any special delivery agreements made previously in writing. A disposition period of 6 days shall apply to goods called for delivery by the purchaser; acceptance shall be deemed as timely up to the end of this period.

In case of default of acceptance the purchaser shall be obliged to pay the full purchase price immediately. 2% of the order value shall be charged per month as a storage fee should default of acceptance lasts for more than four weeks after notification.

If the ordered goods are stocked items the seller may dispose over them as he sees fit if no delivery date has been arranged within two weeks after notification of availability. However, the purchaser shall not acquire the right to withdraw from the order or to claim indemnification by failing to dispose over the goods. In this case no storage fee shall be charged.

Should the purchaser fail to accept the goods despite receiving a reminder and an appropriate grace period, the seller shall be entitled to demand fulfilment of the contract or to cancel the order pursuant to the conditions above and to dispose freely over the goods.

9. Delivery and assembly:

In case of free delivery the purchaser shall be liable for ensuring that the goods can be delivered to the delivery location by usual methods (e.g. by truck). Delivery personnel are not authorised to perform any work that goes beyond the agreed scope of delivery. Waiting times, empty runs and futile delivery attempts which are not the fault of the seller shall be charged at the applicable rates. The purchaser shall notify us of any risks we may not be able to identify. The seller shall only be liable for immediate subsequent damage in cases of intent and gross negligence of his personnel.

10. Guarantee:

Apparent defects and transportation damage shall be recorded immediately on the delivery paperwork upon acceptance of the goods; failure to do so shall result in non-recognition of such defects and damage by the seller. The goods shall be inspected by the purchaser in good time, at the latest prior to further processing and/or cutting to size. Complaints made after further processing and/or cutting and after an unreasonable period of time will not be recognised. Defects discovered at a later date shall be reported to the seller immediately. The assignee ensures that all goods and services shall be provided with due care and diligence. Parts subject to wear and tear are not covered by warranty. The warranty is valid for six months, after which statutory warranty laws apply. The warranty does not cover damage caused by normal wear and tear, improper storage, humidity, other effects of temperature and weather, or improper handling. Furthermore, the warranty does not cover deviations that are usual in the trade or in production (see item 3ff). Unless the seller has explicitly agreed in the order confirmation to deliver materials unfolded, the usual creases left by folding, packaging and transportation shall not be deemed as defects, especially in the case of textiles, canvases and other area-measured material. The seller shall be liable for defects proven to have been extant before delivery, inasmuch as he may replace or repair the faulty goods as he sees fit. The purchaser shall grant the seller sufficient time and opportunity to provide replacement or repairs, otherwise the seller shall be exempt from these obligations and the seller shall not acquire any claims. The purchaser shall only be entitled to conversion or price reduction if replacement or repair is not possible. In case of warranty claims the seller shall only be entitled to retain the amount required for the primary repair. Claims for more than the value of the goods are excluded.

11. Liability

Damage or defects caused to the purchaser's installations and equipment during delivery, assembly, inspection and/or maintenance shall only be rectified by the seller if caused by him or his vicarious agents through gross negligence or intent.

The seller shall be liable to a maximum of €5000 (five thousand Euros) only in cases of gross negligence, unless agreed otherwise in this contract. Liability for slight negligence is excluded. Should these liability limitations be in conflict with obligatory regulations the seller's liability shall be extended in scope and financial compensation to the lowest amount permissible by law.

Any liability of the seller for indirect or subsequent damage, for which claims are raised against the purchaser by third parties or which occur due to conditions peculiar to the purchaser's operations, and for loss of earnings is excluded. Neither shall the seller be liable for damage caused by persons other than his employees nor vicarious agents through improper operation (repair, maintenance).

The seller shall not be liable if he provides evidence that he did not culpably cause the damage or caused it through slight negligence.

12. Impregnation:

The purchaser may only make claims under warranty pursuant to Item 10 of the general terms and conditions if the seller has approved in writing the objects (materials) to be impregnated and other objects (materials) in their vicinity. Otherwise the purchaser shall bear the risk of colour alterations, measurement changes and any other change, and shall also be liable for the fulfilment of standard requirements by the objects (materials) impregnated by the seller and any objects (materials) in their vicinity.

13. Payment:

Cash payment is agreed on principle.

Invoices up to EURO 150 excluding VAT shall be paid immediately in cash or per COD.

If delivery on account has been explicitly agreed with the customer, the following payment terms shall apply:

Payment shall be made within 10 days with 2% discount, or within 30 days with no discount. Individual agreements remain unaffected. Impregnation and other services are payable immediately in full. An interest rate of 8% p.a. above base rate shall be charged for delayed payments (currently 9.47%). The purchaser shall also reimburse the seller all costs for reminders and collection. Cheques and bills shall only be accepted on the condition that they are honoured. Remaining amounts shall become payable immediately if the purchaser defaults on an agreed part-payment.

14. Retention of title:

The goods shall remain the unreserved property of the seller until the purchase price and any receivables have been paid in full.

The seller shall be entitled to demand the return of the goods if agreed payments are not made despite a reminder and a grace period of 10 days. The seller retains the right to assert claims for depreciation and wear and to demand the reimbursement of transportation and legal costs.

15. Product liability:

The seller's duty of replacement is excluded for any material damage the purchaser may suffer as a business person. (§ 9 PHG (Product Liability Law))

16. Miscellaneous:

Purchasers buying as a group are responsible in joint and several liability for the fulfilment of every obligation arising from the purchase contract.

Claims to commission payments are excluded unless previously agreed to in writing by management. The purchaser agrees to the processing of data relating to his person in accordance with data protection laws. Any different terms and conditions of the purchaser are only binding if accepted by the seller in writing.

17. Jurisdiction and law:

The place of jurisdiction for clients with offices registered in Austria is Vienna. Contracts are subject to Austrian law.

The place of jurisdiction for clients with offices registered in Germany is Recklinghausen. Contracts are subject to German law.

The place of jurisdiction for clients with offices registered neither in Austria nor in Germany is Vienna. Contracts are subject to Austrian law.

18. Security clause:

Should any of the provisions of these terms and conditions or the Contract itself be ineffective or vitiable, it shall not affect the effectiveness of other terms and conditions.

The Parties to the Contract hereby undertake to immediately replace the ineffective provision with another provision closest to the most possible extent to the ineffective provision from the economic and legal standpoint. The Contract shall also be binding in the event in which individual provisions thereof are ineffective.



**Portable Dancefloors
for professionals**



**Portable Stage Platform Elements
for indoor and outdoor use**



General Distributor for numerous countries



**Chainhoists
according to BGV-C1
and BGV-D8**



**Service + Distribution
large stock
BGV-C1 + BGV-D8 hoists
electric chainhoists
manually operated hoists**

WWW.TUCHLER.NET

Austria/headoffice
Tüchler GmbH,
Rennbahnweg 78
A-1220 Wien
t: +43 (0)1 400 10
f: +43 (0)1 400 10-20
e-mail: info@tuchler.net

Deutschland
Niederlassung Recklinghausen
Kärntener Str. 31d
D-45659 Recklinghausen
t: +49 (0)2361 302 36-0
f: +49 (0)2361 302 36-29
e-mail: info@tuchler.net

Česká a Slovenská Republika
Agentura Fundus spol. s r.o.
Komenského 427
CZ-664 53 Újezd u Brna
t: +420 5 4422 9001
f: +420 5 4422 4202
e-mail: info@tuchler.cz

Polska
Tuchler - Polska Technika
Estradowa i Tekstylija Sp. z o.o.
ul. Matuszewska 14
PL-03-876 Warszawa
tel: +48 (0) 510 051 959
tel/fax: +48 (0) 22 332 32 63
e-mail: info@tuchler.pl

**Tuchler Scandinavia &
Baltic States**
Skovbyparken 13
DK-8464 Galten
t: 0045 87 77 66 33
f: 0045 87 77 66 34
m: 0045 20 18 54 64
e-mail: info@tuchler.net